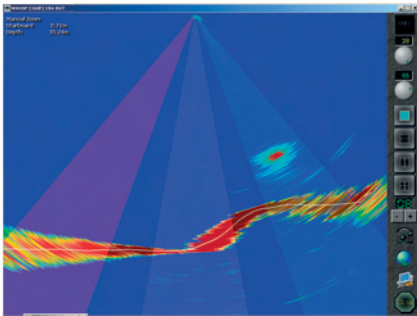
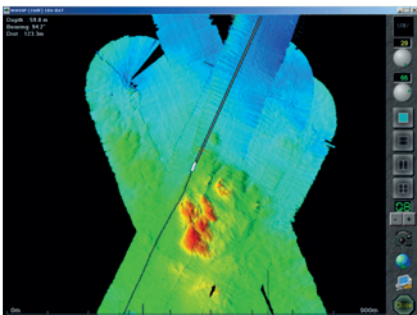


MULTIBEAM SONAR



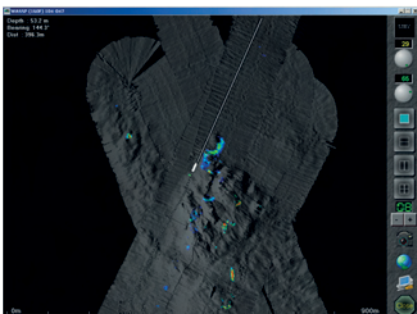
Search

across the 120°-wide high resolution sonar beam.



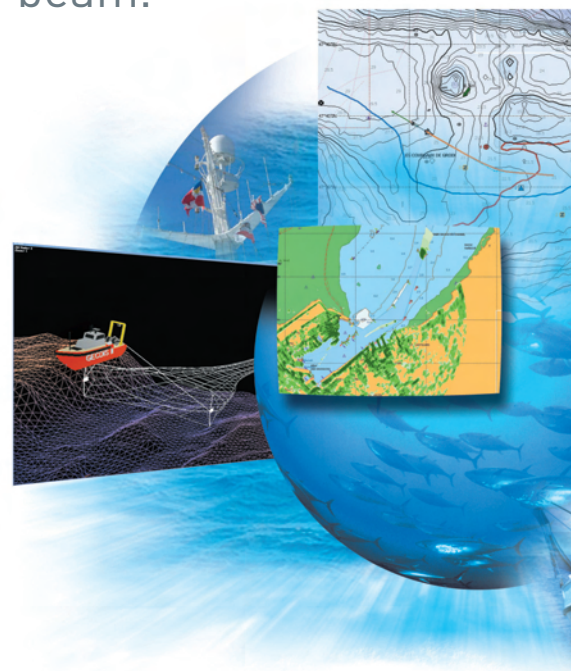
Assess

bottom hardness, bathymetry and hazardous areas.



Locate

fish and select the shoal.



Scanned water volume twelve-times greater than with a conventional echosounder.
Your chances of detecting fish are multiplied by 12.
Shorten your search time.
Save fuel!

WASSP
Detection
Fishing
Bathymetry

TURBO TACTIC
Optimization
Fishing strategy
Consumption
Navigation
Radar, AIS

GEONET
Positioning
Trawl geometry
Water temperature

FISHING DATABASE
Fishing
Bathymetry
Acoustics
Oceanography

ELECTRONIC LOG
Commercial and administrative management of catches

SUSTAINABLE FISHING STRATEGY





MULTIBEAM SONAR

For the first time commercial fishing has multibeam fishery sounder capability. Restricted to scientific institutes until now, the WASSP multibeam concept revolutionizes fishing, boosting yields and providing better catch selectivity.

Twelve times greater water volume scanned

Compared with a conventional sounder using a 10° beam, WASSP scans a 120° beam of the boat. The chances of detecting fish are thus multiplied by 12. Shorten your search time and save fuel!

Ten times better resolution: identify the fish

WASSP's 120° swath consists of 112 beams each only 1.1° wide. It offers unrivalled precision and the ability to determine the aggregation pattern of the fish, even close to the bottom.

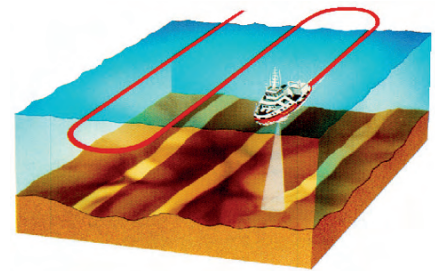
Discover new fishing locations

Thanks to its "acoustic dynamics", WASSP provides exclusive double analysis: fish detection and bathymetry.

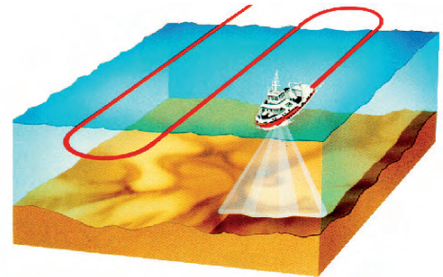
Its beam, with its broad coverage and high resolution, analyzes bottom morphology and hardness with precision over a width equivalent to twice the water depth!

Catch

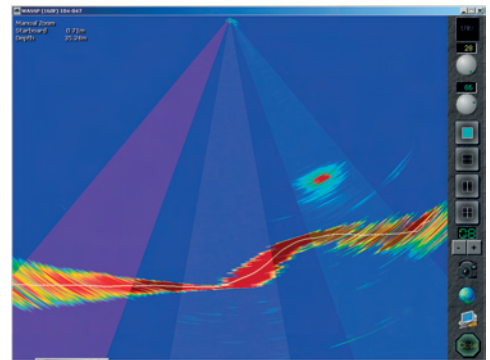
The exclusive "Fish Overlay" function displays the positions of fish shoals against the 3D bottom relief!



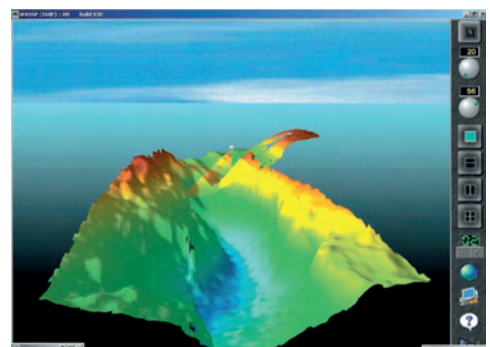
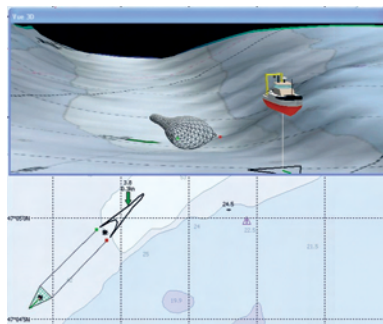
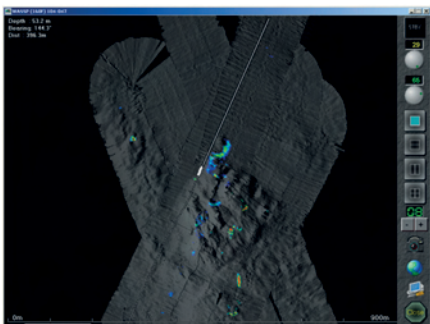
Conventional echosounder.



WASSP multibeam.



Triple echogram.
2D (vertical) sonar view.



Real-time 3D view. Hardness analysis.

Combine WASSP + TURBO TACTIC + GEONET and guarantee the success of your manoeuvres by positioning the trawl facing the shoal as close as possible to areas with fish.

SODENA SAS

30 av. de l'Amiral Lemonnier • 78160 Marly-le-Roi - France • Tel: +33 1 30 08 97 00 • Fax: +33 1 30 08 97 01

www.sodena.eu

info@sodena.eu