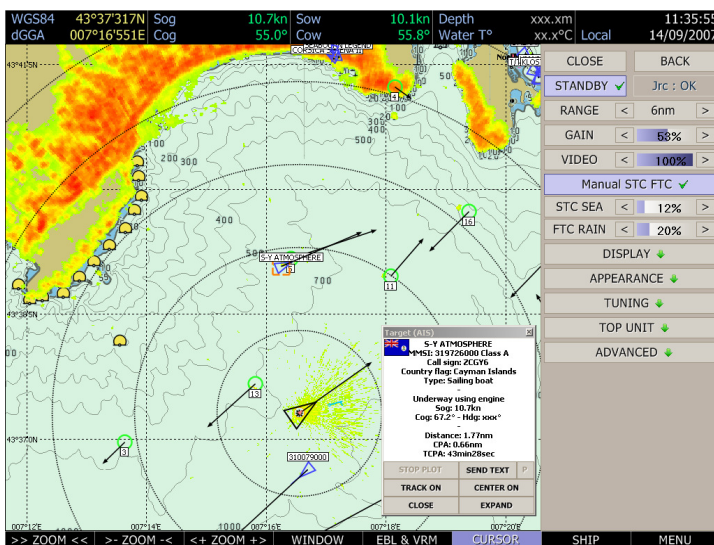


TURBOWIN Version 8

The latest version of TURBOWIN has been specially updated to considerably increase navigational safety and to make fishing easier and more productive.



S57 charts with AIS/Radar overlay

TURBOWIN is a time proof navigational aid and fishing management system serving thousands of fishermen in their everyday professional life.

User-friendly, the system permits to work with official and private charts, as well as to create your own database.

Clear presentation of such essential information as tracks, areas, tidal streams, marks, sedimentology and bathymetry data, as well as 3D imaging, create a real-time picture of your working conditions.

The latest TURBOWIN version, integrating the Mini-ECDIS specifications defined by the Sea Fish Authority, UKHO and MCA, allows paperless navigation and becomes a navigation software standard applied to fishing.

NEW FEATURES:

Automatic update of vessel information from **AIS** equipment.

New customizable **vessels database** for quick visual vessel identification with the help of icons.

Possibility to enter and transmit **AIS** messages.

"Risk of Collision" alarm message displayed directly on the chart.

Improved **S57 ENC's** management & operation

Integrated **Mini-ECDIS** specifications:

- navigation view (only with S57 ENC charts)
- quick access to GPS
- check and route control.

List of **target mobiles** (AIS, Arpa, EBL Mark) and messages.

JRC/Koden **Radar** integration.

Vista compatible.